

LIMBO CREEK IS A PUBLIC WATER



THE PROBLEM

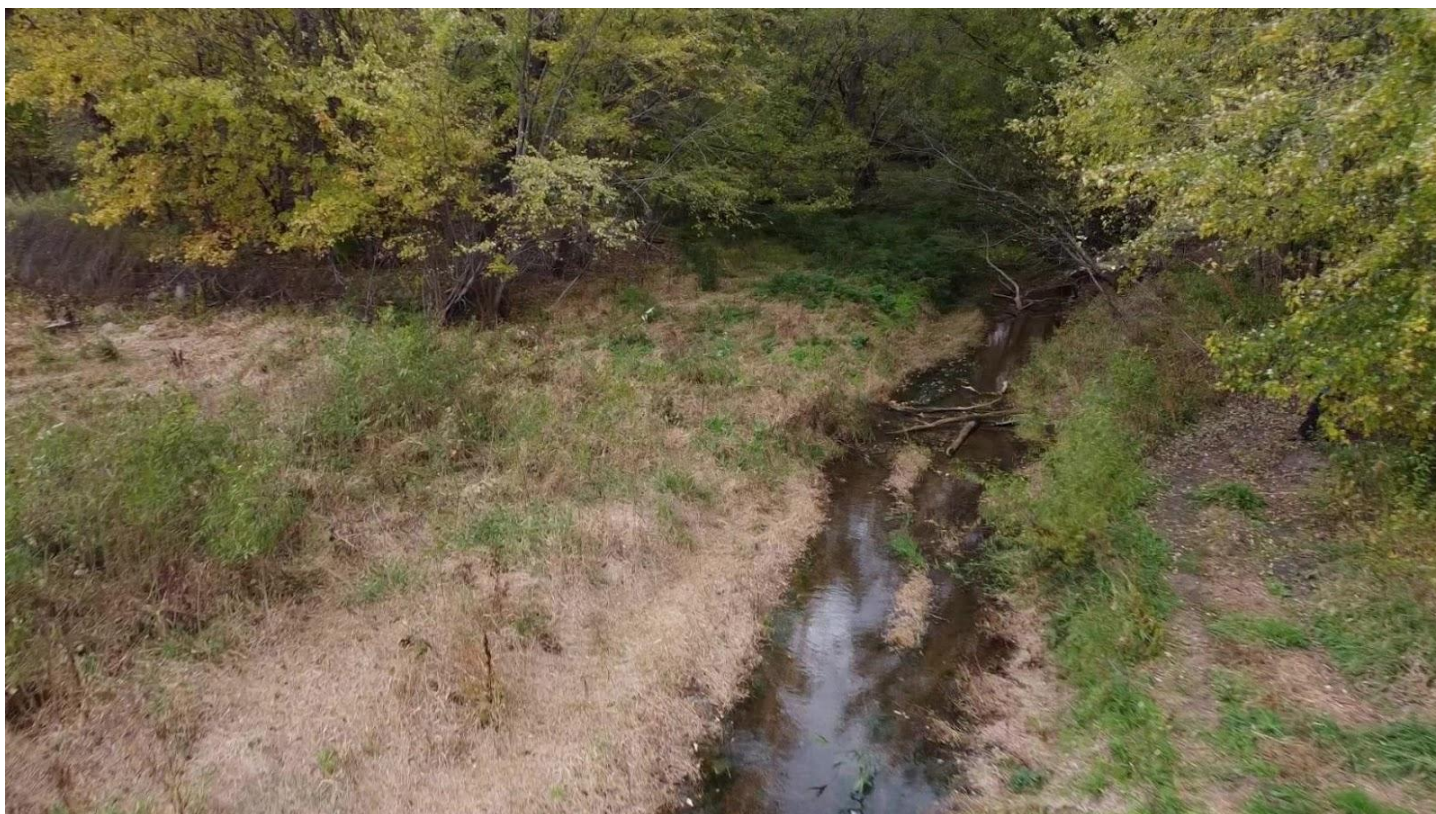
- Agricultural drainage practices have transformed Minnesota’s landscape. In Renville County, 90% of rainfall will reach the Minnesota River within 48 hours.
- 1980 – Limbo Creek was wrongly listed as a “public ditch” in the DNR Public Waters Inventory (PWI).
- Limbo Creek has been the subject of numerous ditching attempts since the 1970’s, due in part to the creek’s omission from the Public Waters Inventory.

BACKGROUND

- Limbo Creek, which meets the definition of a public water, is one of the last free-flowing streams in Renville County.
- November 2020 – Despite DNR stating that Limbo Creek is a public water and the CD 77 project requires environmental review, Renville County denies MCEA’s petition for environmental review and approves the CD 77 project.
- October 2021 - In 2021, the court determined that waters that meet the definition of a public water will require environmental review regardless of their status on the PWI

MINNESOTA'S PUBLIC WATERS DESERVE PROTECTION

- All public waters that have a total drainage area of over 2 square miles meet the definition and are therefore subject to the same protections as listed waters on the Public Waters Inventory (PWI). The PWI is a tool, and does not stand in for the law's definition of a public water.
- Limbo Creek is just one example of waterways in Minnesota that require protection. Drainage projects and alterations to natural streams have significant impact on our watersheds and can negatively impact the Minnesota and Mississippi Rivers.
- MCEA has worked with farmers, landowners, and local conservation groups to push for re-listing Limbo Creek as a public water, and to prevent another addition to the erosion problem in the Minnesota River valley. This erosion is damaging and expensive. In just one example, the City of Mankato is incurring over \$10 million in expenses to prevent a major city well from being swallowed by an eroding riverbank.



Contacts

MCEA Legislative Associate, Andrea Lovoll | alovoll@mncenter.org

MCEA Water Policy Associate, Nadia Alsadi | nalsadi@mncenter.org

MCEA Senior Staff Attorney, Elise Larson | elarson@mncenter.org



Distributed and produced by the Minnesota Center for Environmental Advocacy

Contact: Elise Larson, Senior Staff Attorney | elarson@mncenter.org